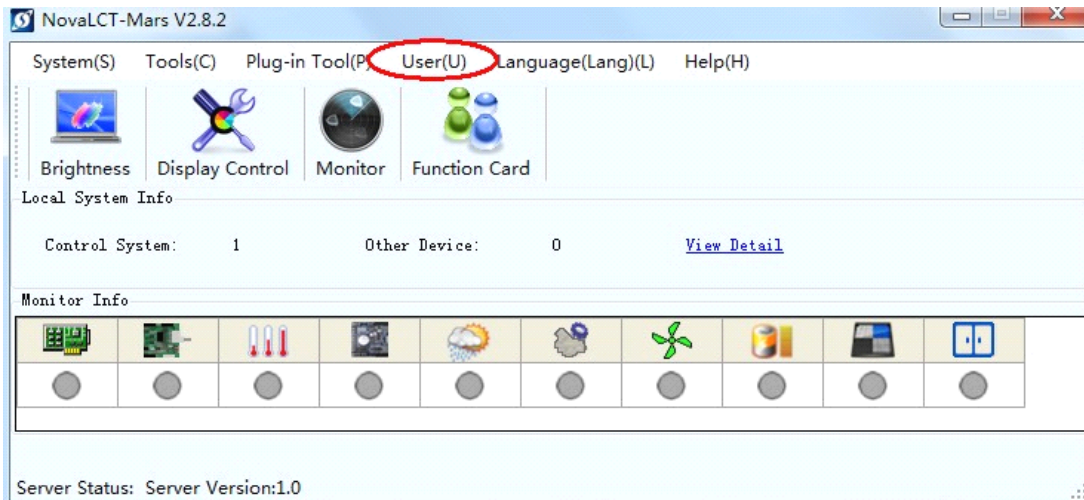
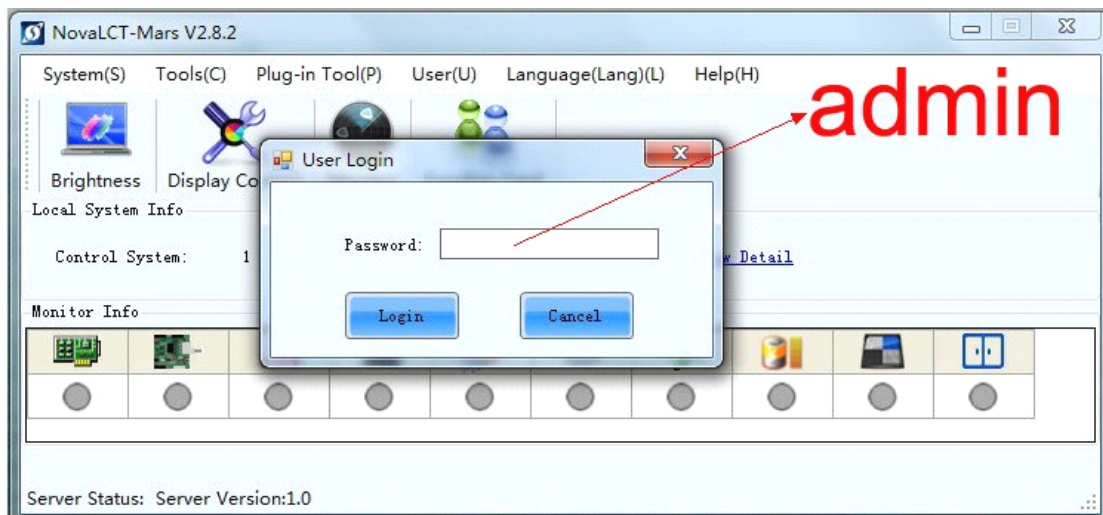


Sending Card Configuration

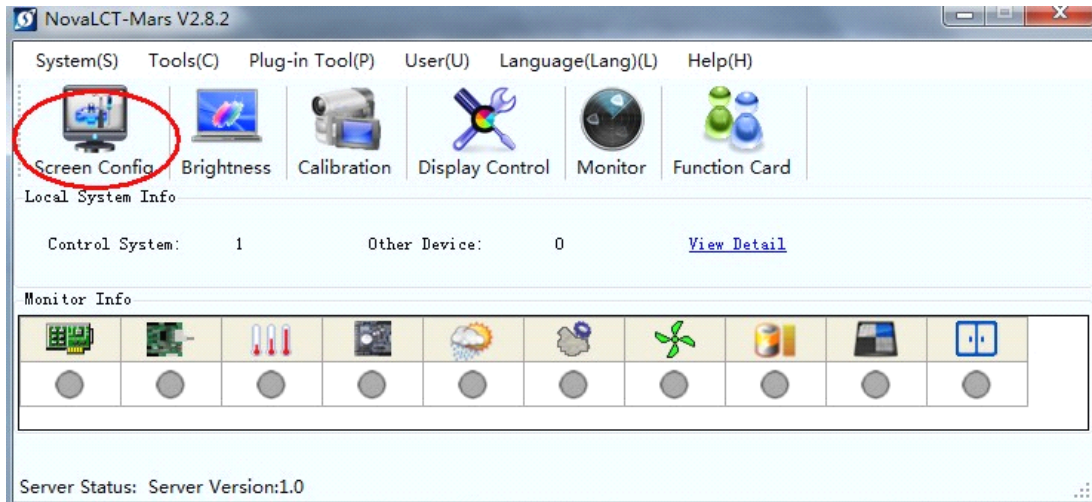
1. Run NovaLCT-Mars



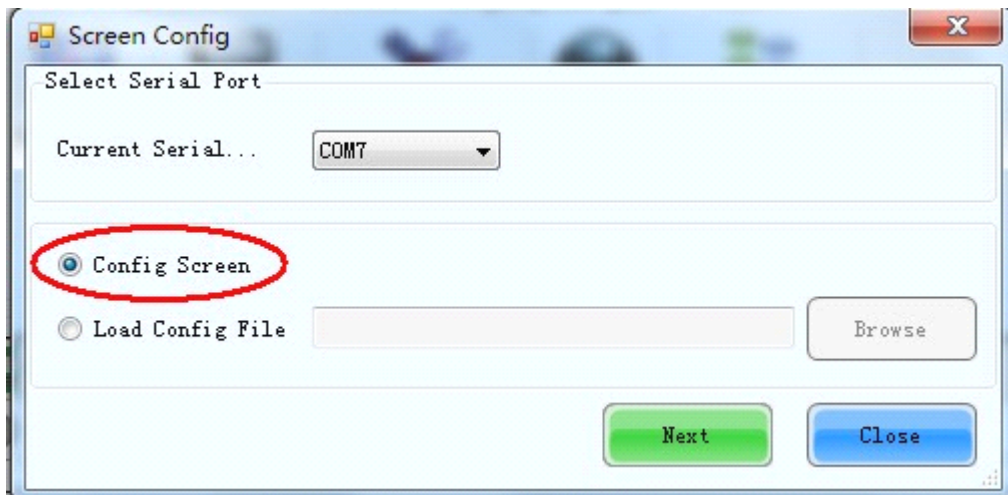
2. Login as Advanced user



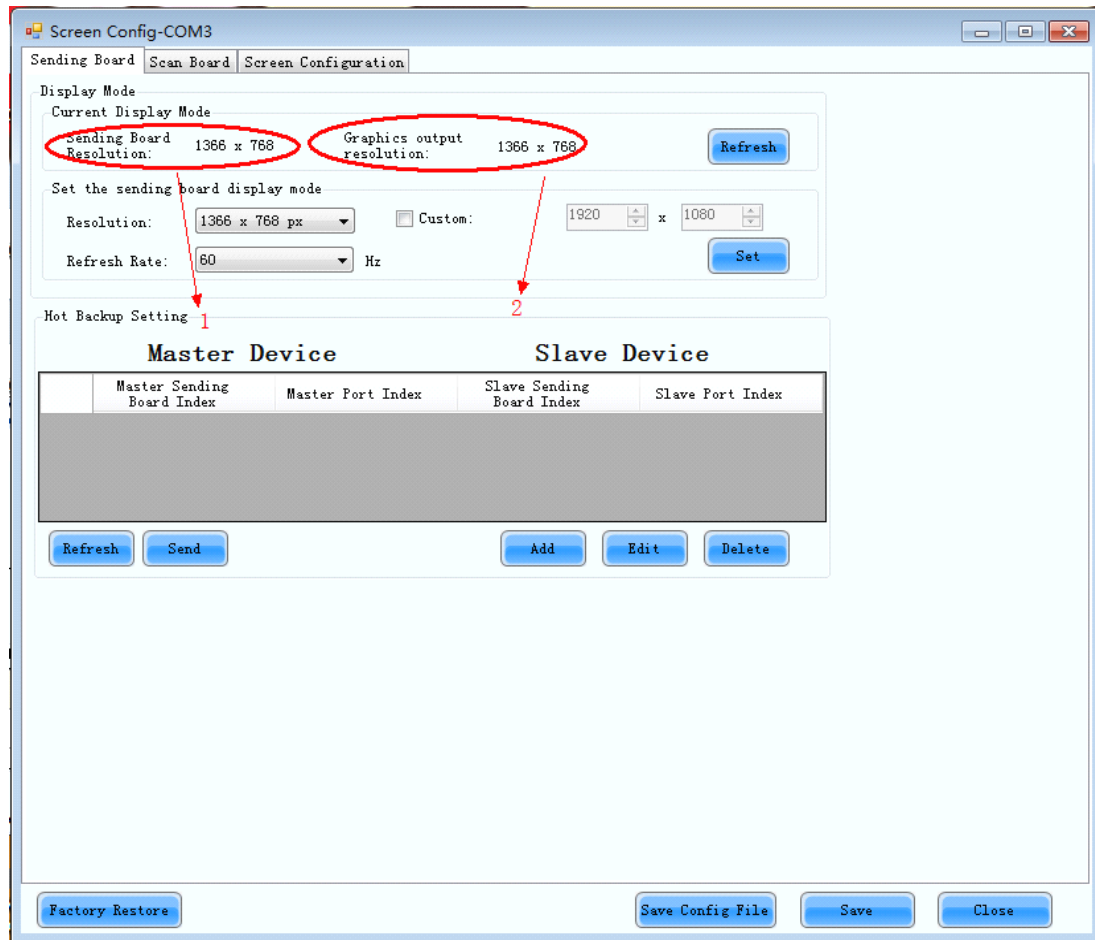
3. Press “Screen Config” Icon



4. Select “Config Screen”

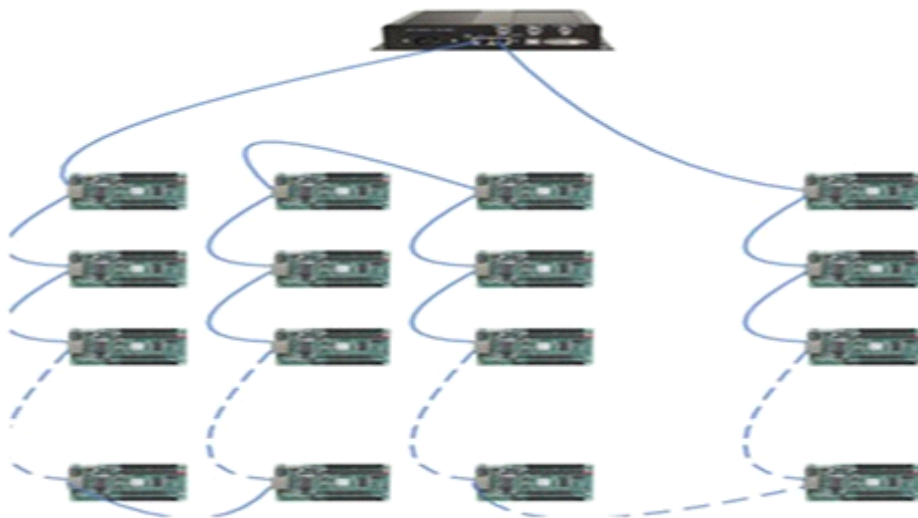
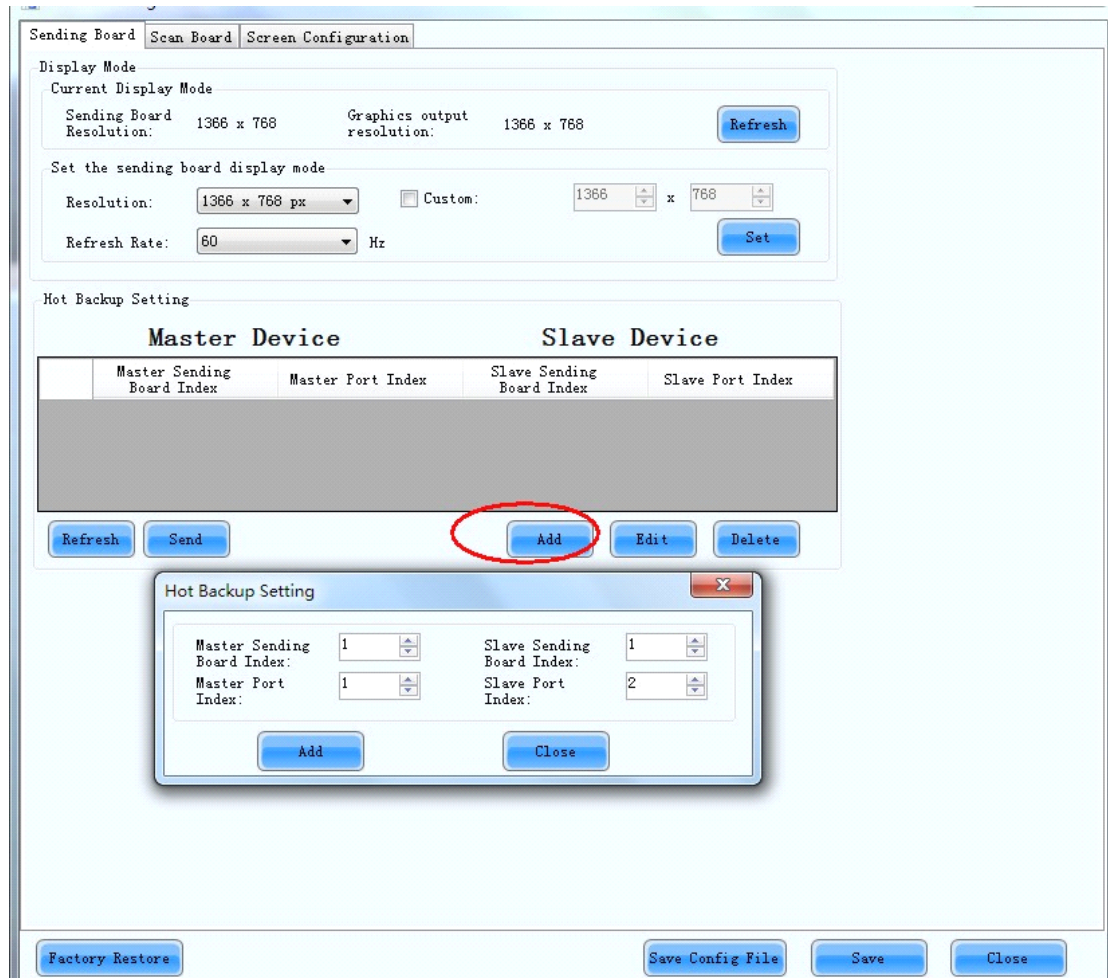


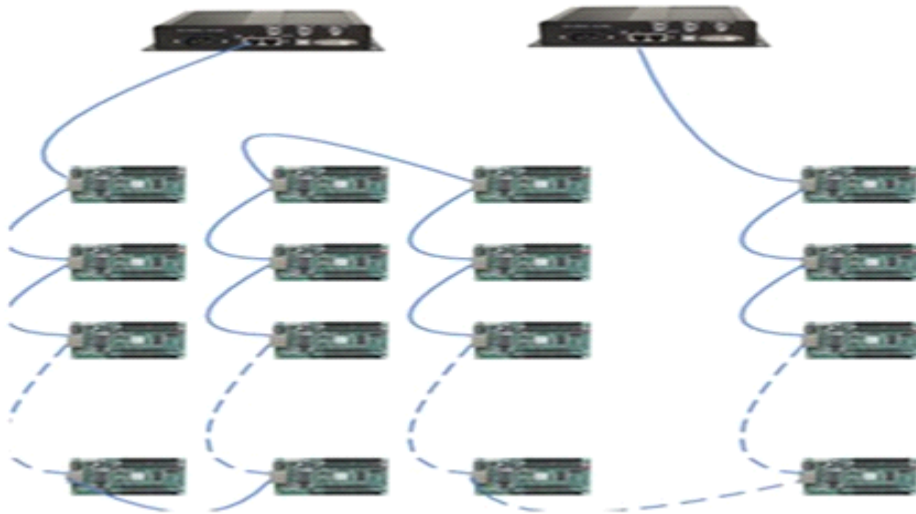
5. Enter "Sending Board" page to config sending card resolution



Config Graphic card resolution and sending card resolution, make sure sending card resolution is no more than Graphic card resolution.

6. Hot backup configuration





Add: select “Add” in Hot backup Settings, config Master/Slave sending card and Master/Slave port, and then press “Send”

Refresh: update current sending card hot backup status;

Edit: edit current hot backup settings

Delete: delete current hot backup settings