

NovaStudio2012 Installation Instructions

一. Installation

1. Use **mouse left button** to double click “NovaStudio2012 Setup VX.X.exe”, A dialog for language would be show as Fig. 1.1.



Fig.1.1 Select installation language

2. Select “**English**”, click “**OK**”, The welcome interface is shown as Fig.1.2. Continue installation, please click “**Next**”.

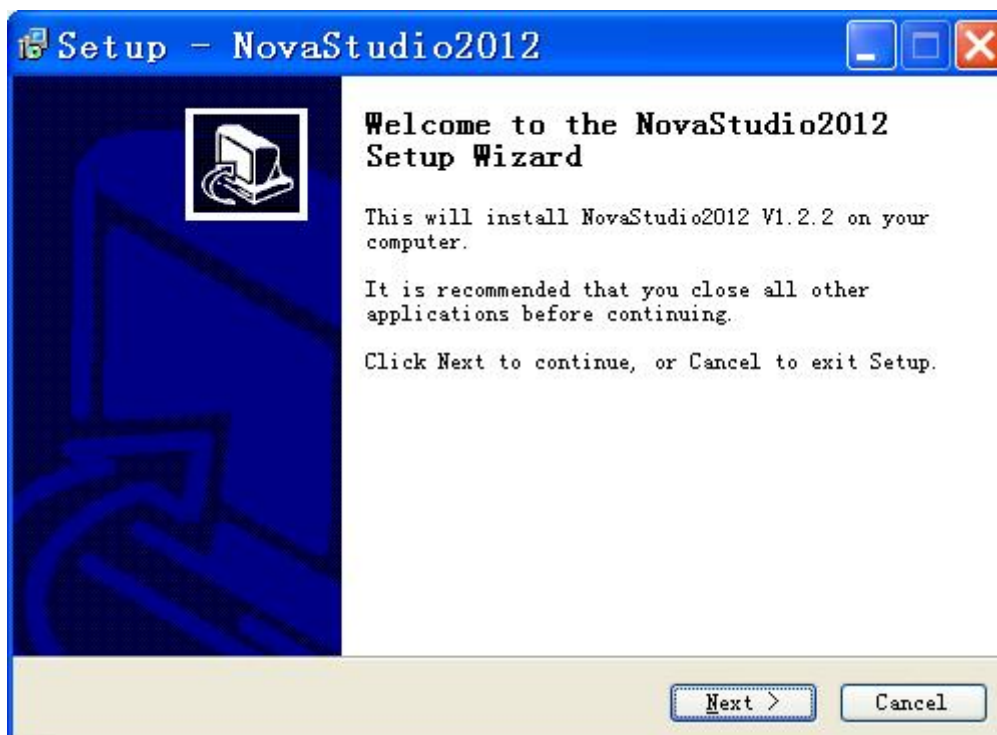


Fig.1.2 Installation welcome interface

3. Please choose or input the installation folder in the interface shown as Fig.1.3, Click “**Browse...**” to select a folder. After setting, click “**Next**”.

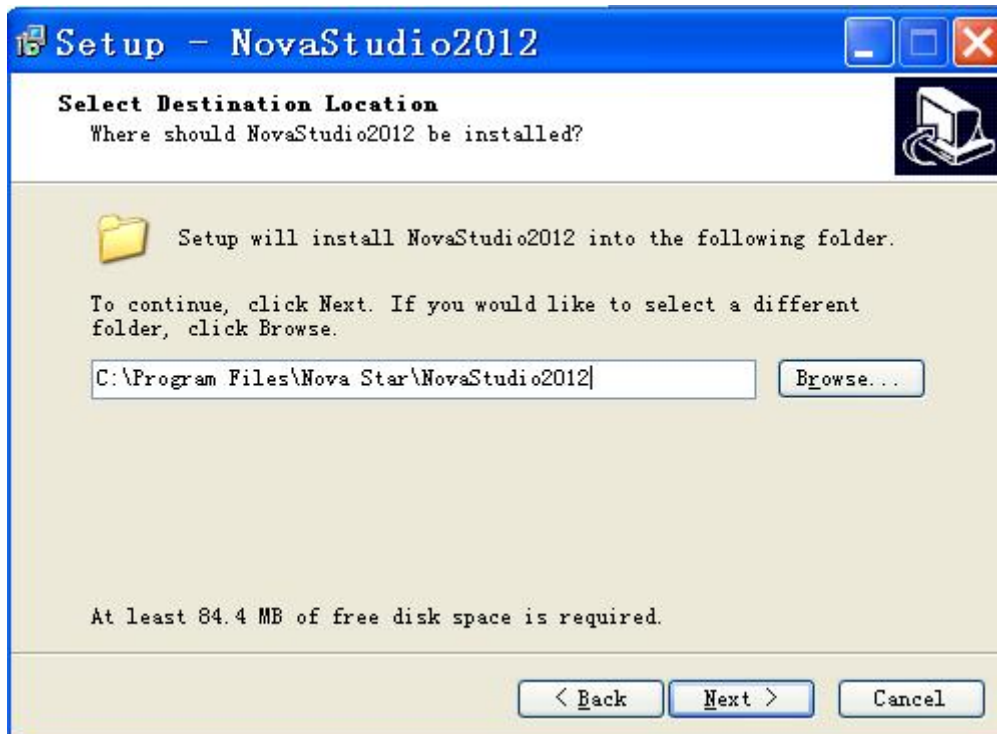


Fig.1.3 Installation Folder

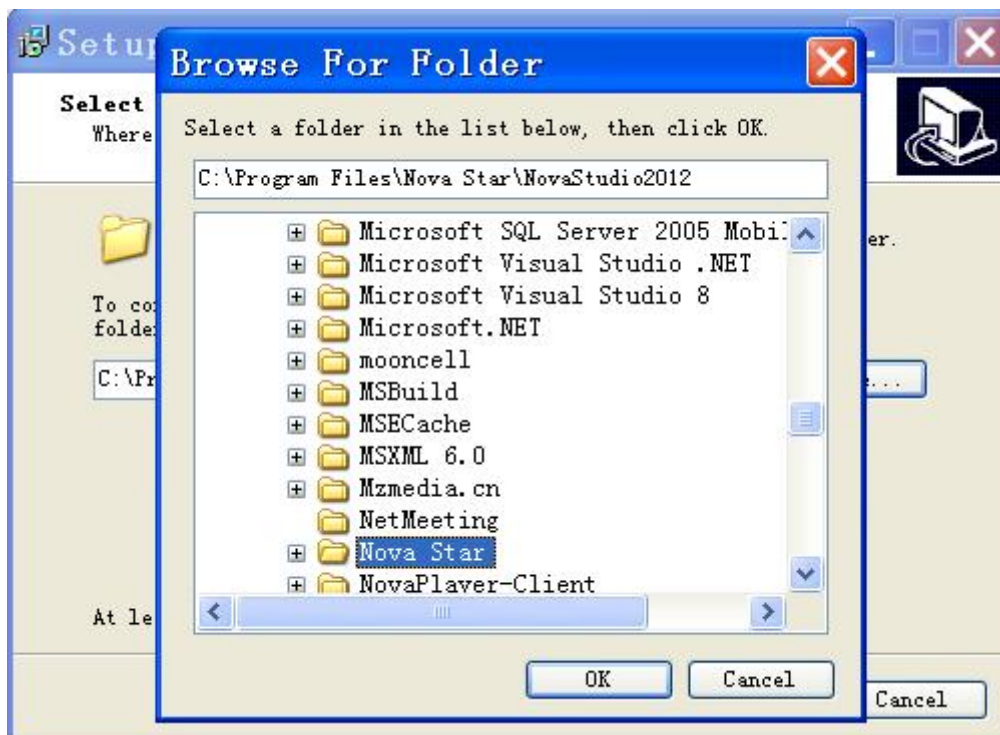


Fig.1.4 Browse For Folder

4. Select or input the **Start Menu Folder** in the interface shown as Fig.1.5, then click “Next”.

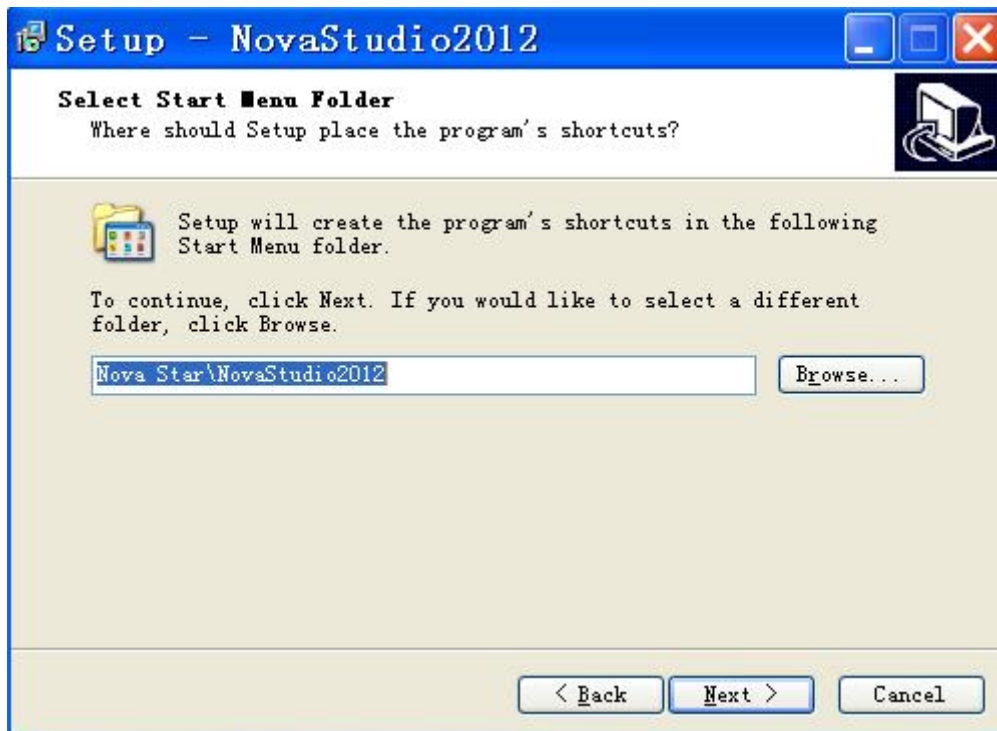


Fig.1.5 Start Menu Folder

5. In the Fig1.6, If you want to create a desktop, please check **“Create a desktop icon”**, then click **“Next”**.

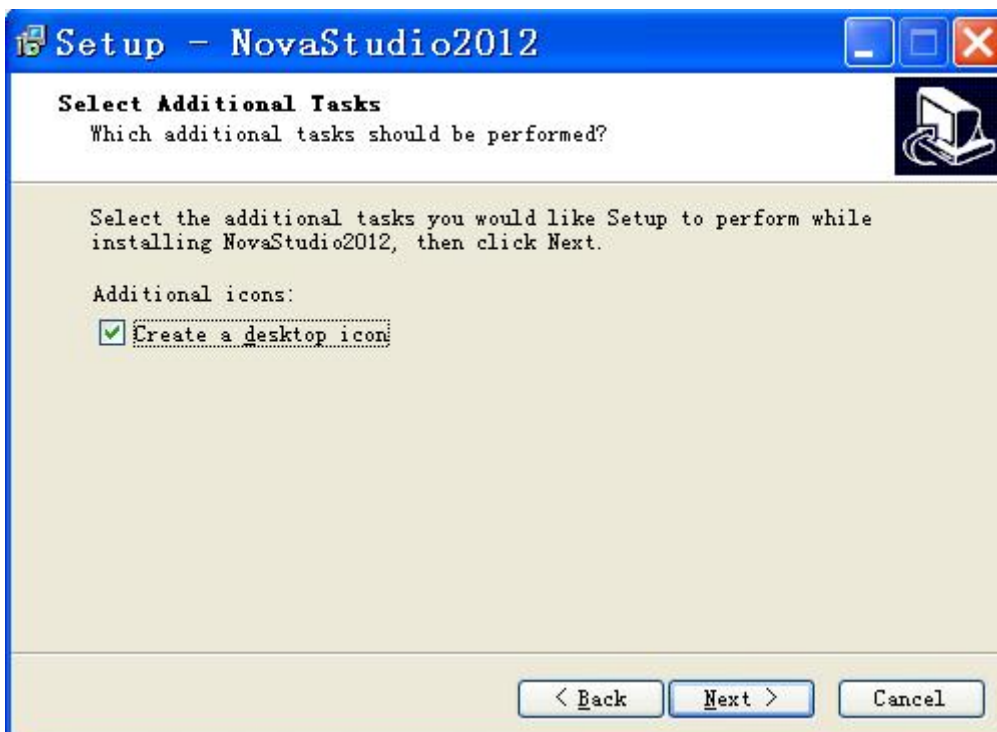


Fig.1.6 Create a desktop icon or not

6. In the Fig.1.7, you can see all the settings of the above interfaces. After

confirmation, please click “**Install**”, or click “**Back**” to reset.

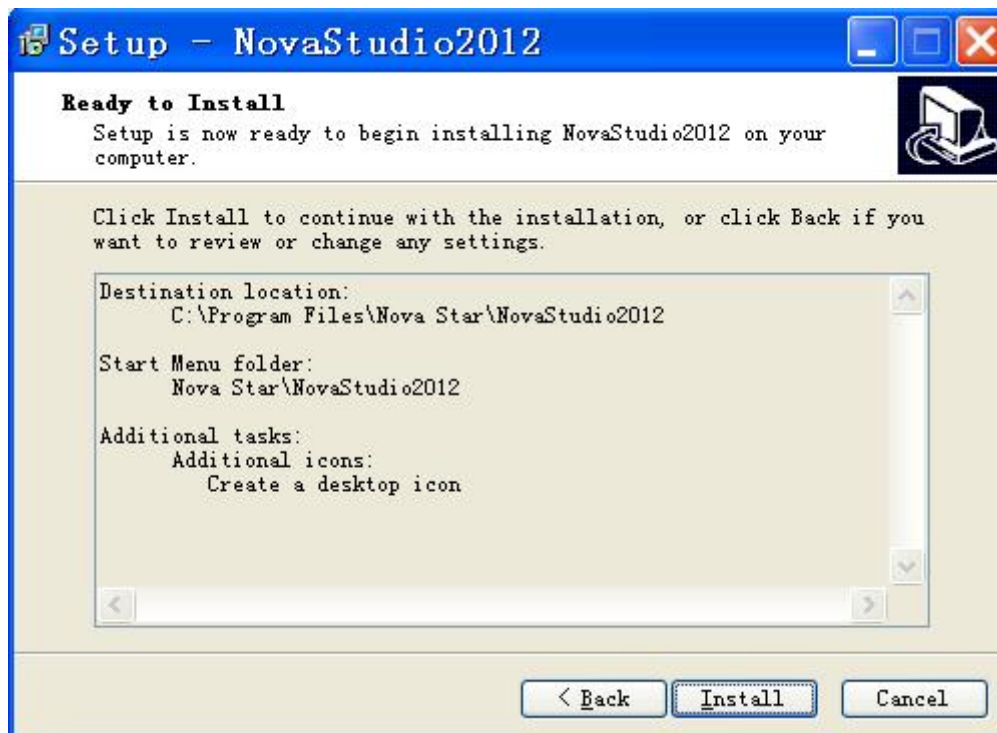


Fig. 1.7 Ready to Install

7. Setup process is shown as Fig.18.

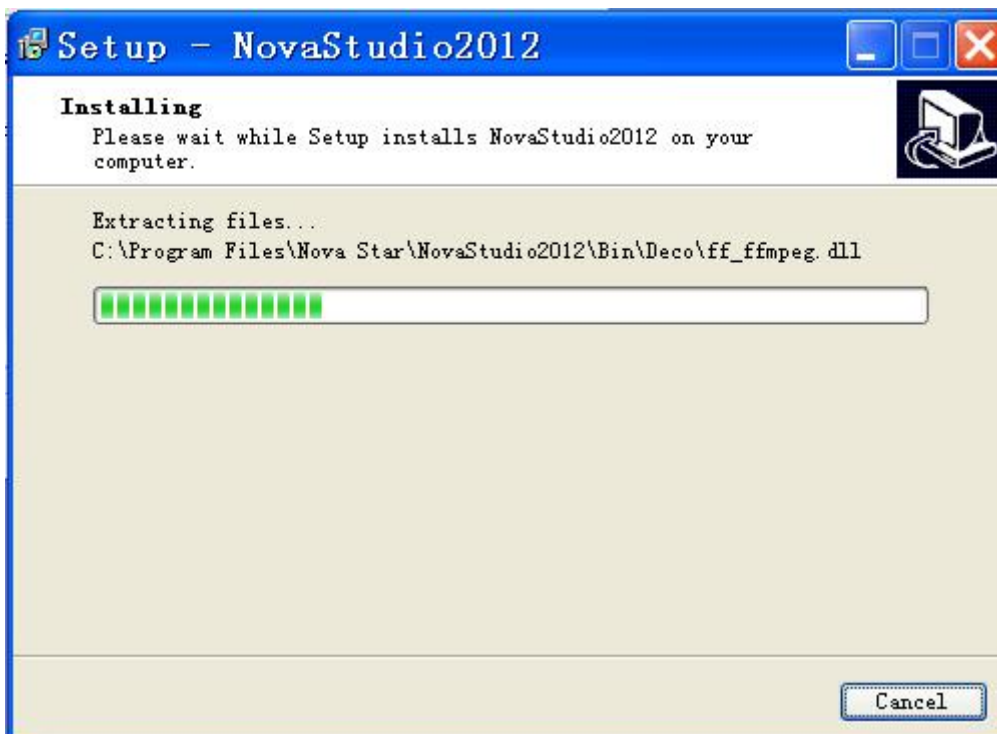


Fig. 1.8 Setting up

- Setup finished, shown as Fig.1.9.

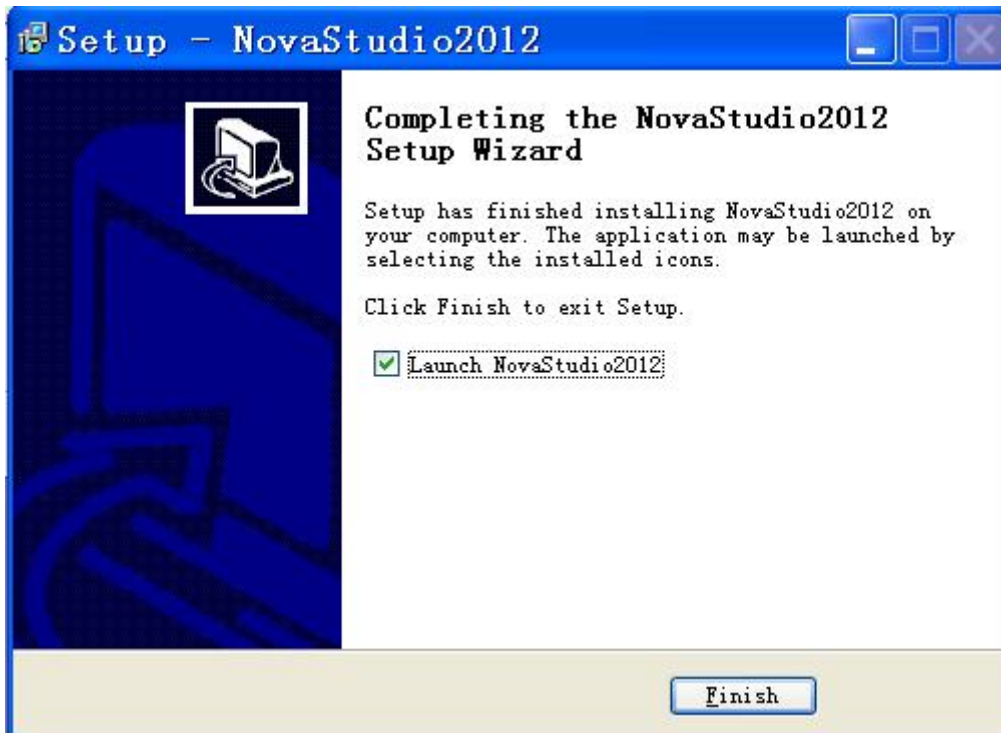


Fig.1.9 Finish Setup

二. Uninstall

- Click "Start", find the start menu folder of NovaStudio2012, as Shown in Fig2.1. Then Click "Uninstall NovaStudio2012".

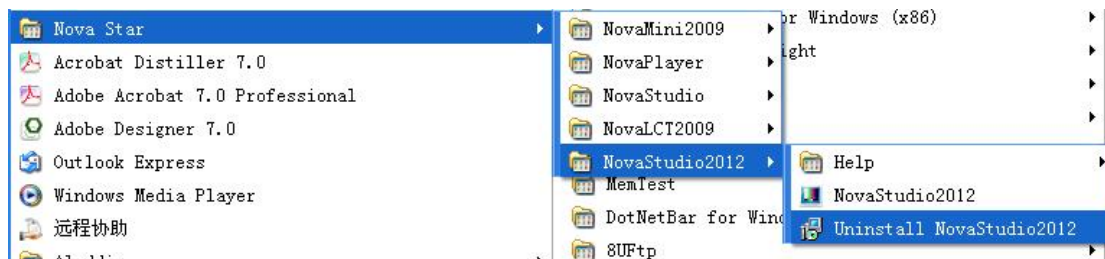


Fig.2.1 Select "Uninstall NovaStudio2012"

- If continue uninstall, please click "Yes", or click "No" to exit uninstall.

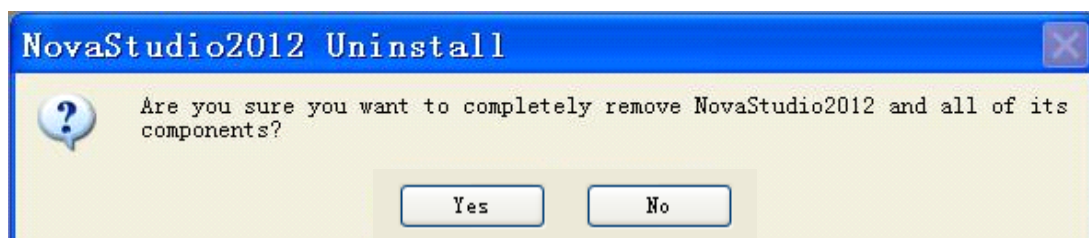


Fig.2.2 Sure to uninstall

3. Uninstall is finished, as shown as Fig.2.3.



Fig. 2.3 Uninstall finished